

Summary of Research Center Project

Center name:

International Center for Quantum-field Measurement Systems for Studies of the Universe and Particles (QUP)

Host institution: High Energy Accelerator Research Organization (KEK)

Head of host institution: Masanori Yamauchi, Director General

Prospective Center director:

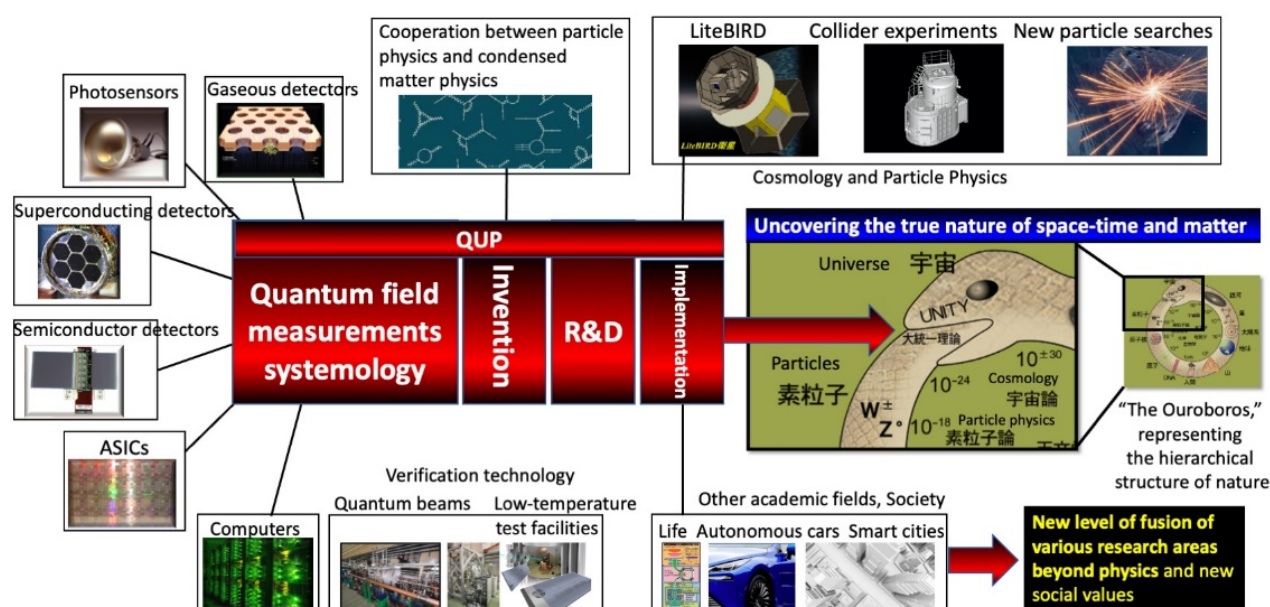
Masashi Hazumi, Professor, Institute of Particle and Nuclear Studies (IPNS), KEK

Prospective Administrative director:

Katsuo Tokushuku, Professor, Institute of Particle and Nuclear Studies (IPNS), KEK

(1) Overall Framework of the Center Project

Physics aims at an essential and unified understanding of the laws behind various physical phenomena ranging from particles to the universe. In physics, new research methods or means to establish the unification theory are highly evaluated, as clearly seen from the past research for which Nobel Prizes have been awarded. This center will return to the essence of physics and conduct interdisciplinary research on methodology by making maximum use of the research infrastructure resources of KEK, which is an international center of accelerators. In modern physics, a "quantum field" is the spacetime in which particles and quasiparticles are created and annihilated. The fundamental equations it obeys are being explored both theoretically and experimentally. Physicists have been exploring the fundamental equations governing quantum fields both theoretically and experimentally. "Quantum field measurement systems" in the name of this center is a new concept that has two meanings: one is to measure the quantum field, and the other is to measure "with" the quantum field (including various quasiparticles). This center focuses on quantum field measurement systems, which have been undergoing significant innovation in recent years, and aims to bring about innovative development through interdisciplinary research of particle physics, astrophysics, condensed matter physics, measurement science, and systems science. This means that humanity will gain new "eyes," so to speak. It will lead to applications in various academic fields beyond physics and their huge and high-level fusion. Furthermore, it will pave the way for implementation in the future society, as represented by smart cities. Based on the above, we describe this center's basic idea (slogan for the public), missions, identities, and goals.



First of all, the basic idea (slogan for the public) of this center is **to bring new "eyes" to humanity and to look at the origin of this beautiful world (the true nature of time, space, and matter).**

The missions of this center are as follows.

- **Integrate** particle physics, astrophysics, condensed matter physics, measurement science, and systems science.
- **Invent and develop** new systems for measuring quantum fields (space-time with particles and quasiparticles created and annihilated, and associated physical quantities).
- Bring **innovation** to measurements in cosmological observations and particle experiments, and **elucidate** the true nature of space-time and matter.
- **Establish** a new measurement science, quantum field measurement systemology, as a science of means through the above practices.
- Last but not least, we will **create a new level of fusion of various research areas beyond physics** and new social values through application to other fields and social implementation.

The identities of this center are as follows.

- I) The only center in the world that integrates the **invention** of new measurement principles for experimental cosmology and particle physics, the **development** of systems to realize these principles, and the **execution** of projects.
- II) This center will conduct **interdisciplinary research on "means" or "methodologies."** It is at the meta-level, **leading to a new level of fusion of various research areas to produce academic and social values.**
- III) Capability of characterizing measurement systems using the **various quantum beams** provided by KEK's accelerator facilities.
- IV) Leveraging **our experience as a host of large-scale international collaborative experiments** in fundamental research fields to conduct international research collaborations at an unparalleled level.
- V) Leveraging our **experience as an inter-university research institute**, we will lead the world and make significant contributions to the research and education of universities and research institutions in Japan and abroad.

Based on the above mission and identity, the goals of this center are defined as follows.

- 1) To invent new principles and measurement systems to search for theoretically predicted novel quantum fields.
- 2) To lead the world in the grand challenges of cosmology and particle physics by developing and implementing new quantum field measurement systems in international projects such as the LiteBIRD satellite project and collider experiments.
- 3) To propose and promote new projects based on new quantum field measurement systems.
- 4) To develop new methods of data analysis, which correspond to the "brain" of the measurement system, and apply them to cosmology and particle physics.
- 5) To establish a new measurement science, quantum field measurement systemology, as a "science of means" through the above practices.
- 6) To employ researchers whose primary goal is to give back to society, realize social implementation (smart cities, automatic driving, medical care, etc.), and at the same time, actively develop applications in other academic fields.

- 7) To cultivate the next generation of human resources who are proficient in systems science and have deep expertise.

(2) World-Leading Scientific Excellence and Recognition

1) Research content

This center will perform the invention, development, and implementation of innovative quantum field measurement systems to achieve six of the seven goals described in “(1) Overall Framework of the Center Project”, excluding human resource development. Major examples include a new measurement system using quasiparticles, a new semiconductor detector with more than two orders of magnitude better radiation tolerance than the previous one, integration of new sensor development and integrated circuit development, automation of analog integrated circuit development, and a superconducting detector array for the LiteBIRD satellite. The PIs in charge of each research will prepare and proceed with clear goals and project plans for the next 5 and 10 years. By introducing systems engineering methods into all activities, we will accelerate the accumulation and sharing of know-how through practice and foster systemology.

2) Interdisciplinary research

In this center, researchers in particle physics and astrophysics, condensed matter physics, quantum beam science, measurement science, and systems science will come together to conduct interdisciplinary research and bring about innovations in quantum field measurement systems. The new "eyes" created by this 1st-level fusion of research fields will lead to a new level of fusion of various research areas beyond physics, in addition to breakthroughs in particle physics and cosmology. Relevant research areas include chemistry, biology, medicine, archeology, and even neuro-aesthetics. This 2nd-level fusion will bring entirely new academic and social values. Concerning initiatives toward social implementation, in particular, we will promote interdisciplinary research that transcends the boundaries of industry and academia, with the cooperation of the Toyota Group.

3) Research outcomes

A variety of research results are expected from this center, and three expected outcomes are shown below:

- (a) Discovery of primordial gravitational waves from cosmic inflation
- (b) Discovery of a new quantum field (such as the Axion)
- (c) Invention of a non-contact shaft-bearing system with Casimir force with “zero friction,” which drastically changes mechanically-movable structures’ designs

These missions are much broader than those of LiteBIRD and cover areas not addressed at KEK, including non-accelerator particle physics experiments, cosmology, and activities for social implementation. But the unexpected discovery is what we hope for. In the words of Professor Peter Goddard, former Princeton Institute for Advanced Study, “If you know what you’re going to do and how you’re going to do it and when you’re going to do it by, it is not going to be truly original research. We are finding out things we couldn’t imagine.”

(3) Global Research Environment and System Reform

1) International research environment

The PIs at this center are international and diverse, with more than 20% foreign nationals and about 40% women. Through international recruitment, the fraction of foreign researchers at the center will be above 30%. The official language of this center shall be English. KEK hosts large-scale international collaborations and accepts many collaborators from Japan and abroad. We will further develop this know-how to create an environment where researchers can devote themselves to their research by providing

support and convenience for their research and life.

2) Center management and system reform

Under the leadership of the Center Director, core members will hold Center Steering Committee meetings to understand the director's goals and policies and discuss critical operational matters such as personnel and budget. The Systemology Support Section provides PI projects with systems science support. We will open three satellites, including one in the US, to carry out efficient R&D and establish robust collaboration even under COVID-19 restrictions. KEK, as the host institution, will clarify its commitment to KEK's mid-term plans.

(4) Values for the Future

1) Generating and disseminating the societal value of basic research

Research that explores space, time, and subatomic particles awakens in public a sense of wonder that transcends science. Intellectual values newly created at this center will bring confidence and pride to the people of Japan. It will also contribute significantly to the country's continued existence as a first-class country, distinguished by other countries. In collaboration with ISAS/JAXA, Kavli IPMU, AIST, and others, this center will widely share such intellectual value with the public via the web, lectures, open houses, and SNS, by allocating dedicated human resources such as URA for outreach.

2) Fostering next-generation human resources linked with higher education

The educational goal of this center is to develop the next generation of talents who are proficient in systems science and have deep expertise in specific fields. We will hold annual quantum field measurement systemology training and practice courses utilizing KEK's infrastructure for graduate students in elementary particles, cosmology, measurement science, and related fields. By learning about sensors, ASICs, computers, data analysis, and the systemology that integrates them at this center, young researchers will become scientists who can play an active role in academic posts and a wide range of industries. The center will provide training and career development support at each stage, from graduate student to post-doctoral fellow to tenure-track/tenured faculty.

3) Self-sufficient and sustainable center development

KEK will position this center as a unique organization that contributes to forming world-class activities and an independent research organization distinguished from other research organizations within KEK. To make the center permanent, KEK will assist the center in establishing its financial base. Along with this, some of the senior researchers and technical staff hired by WPI will be tenured after the sixth year, and upgrade of the facilities will be promoted.

Research Center Project

* Compile in English within 25 A4 pages.

Center name:

International Center for Quantum-field Measurement Systems for Studies of the Universe and Particles (QUP)

Host institution: High Energy Accelerator Research Organization (KEK)

Head of host institution: Shoji Asai, Director General

Center director:

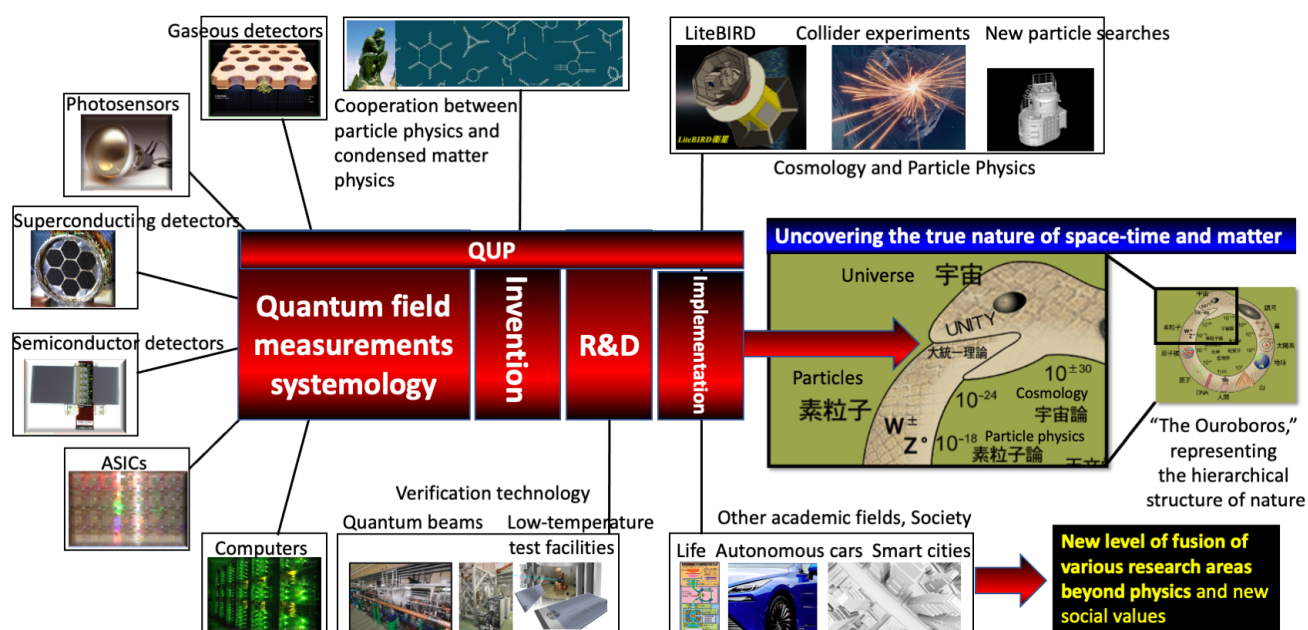
Masashi Hazumi, Professor, KEK

Administrative director:

Katsuo Tokushuku, Professor, KEK

1) Overall Framework of the Center Project

* Clearly and concisely describe your center's mission statement as a WPI center, its identity, and its goals toward achieving the objectives of the WPI program.



First of all, the basic idea (slogan for the public) of this center is **to bring new "eyes" to humanity and to look at the origin of this beautiful world (the true nature of time, space, and matter).**

The missions of this center are as follows.

- **Integrate** particle physics, astrophysics, condensed matter physics, measurement science, and systems science.
- **Invent and develop** new systems for measuring quantum fields (space-time with particles and quasiparticles created and annihilated, and associated physical quantities).
- Bring **innovation** to measurements in cosmological observations and particle experiments, and **elucidate** the true nature of space-time and matter.

- **Establish** a new measurement science, quantum field measurement systemology, as a science of means through the above practices.
- Last but not least, we will **create a new level of fusion of various research areas beyond physics** and new social values through application to other fields and social implementation.

The identities of this center are as follows.

- I) The only center in the world that integrates the **invention** of new measurement principles for experimental cosmology and particle physics, the **development** of systems to realize these principles, and the **execution** of projects.
- II) This center will conduct **interdisciplinary research on "means" or "methodologies."** It is at the meta-level, **leading to a new level of fusion of various research areas to produce academic and social values.**
- III) Capability of characterizing measurement systems using the **various quantum beams** provided by KEK's accelerator facilities.
- IV) Leveraging **our experience as a host of large-scale international collaborative experiments** in fundamental research fields to conduct international research collaborations at an unparalleled level.
- V) Leveraging our **experience as an inter-university research institute**, we will lead the world and make significant contributions to the research and education of universities and research institutions in Japan and abroad.

Based on the above mission and identity, the goals of this center are defined as follows.

- 1) To invent new principles and measurement systems to search for theoretically predicted novel quantum fields.
- 2) To lead the world in the grand challenges of cosmology and particle physics by developing and implementing new quantum field measurement systems in international projects such as the LiteBIRD satellite project and collider experiments.
- 3) To propose and promote new projects based on new quantum field measurement systems.
- 4) To develop new methods of data analysis, which correspond to the "brain" of the measurement system, and apply them to cosmology and particle physics.
- 5) To establish a new measurement science, quantum field measurement systemology, as a "science of means" through the above practices.
- 6) To employ researchers whose primary goal is to give back to society, realize social implementation (smart cities, automatic driving, medical care, etc.), and at the same time, actively develop applications in other academic fields.
- 7) To cultivate the next generation of human resources who are proficient in systems science and have deep expertise.

2) World-Leading Scientific Excellence and Recognition

2) -1 Research fields

- * Write in your target research field(s)
- * Describe the importance of the target research field(s), including the domestic and international R&D trends in that research domain and neighboring field(s), and describe the scientific and/or social significance of the field(s).
- * Describe the value of carrying out research in the field(s) as a WPI center (e.g., Japan's advantages in the subject fields, the project's international appeal as an initiative that challenges world-level science issues, and the future prospects of the research)
- * List up to 5 centers either in Japan or overseas that are advancing research in fields similar to the center's field(s), and evaluate research levels between your center and those centers.
- * Appendix 4: "Up to 10 English-written papers (review papers are also acceptable) closely related to the center's project and their list" (to be attached)

2) -1 -1 The target research field

The main target research field is mathematical and physical sciences, in particular particle physics and cosmology. However, the new quantum field measurement systems invented and developed at this center will lead to a new level of fusion of various research areas beyond physics. Relevant research areas include chemistry, biology, medicine, archeology, and even neuro-aesthetics.

2) -1 -2 The importance of the target research field, and the value of carrying out research in the field(s) as a WPI center

For the past half-century, particle physics, a field that originated in quantum mechanics, has been conducting fundamental research on quantum fields, which can be described only by field quantization beyond particle quantization. It is no exaggeration to say that the core of experimental approaches to solving the great mysteries of the universe, subatomic particles, and life can be traced chiefly back to the measurement of quantum fields. For example, at the B-factory experiment at KEK, the phenomenon of the bottom quark decaying into several other particles, such as charm quarks and electrons, was closely examined. Precise agreements with quantum field theory were found, which led to the Nobel Prize to Professors Kobayashi and Maskawa. The results of particle physics research based on quantum fields have resulted in many Nobel Prizes in Physics. The measurement technology cultivated there is a crucial technology for clarifying everything from the head to the tail of the Ouroboros serpent [see the figure in section 1) The overall picture of base formation], which represents the entirety of the natural world, from the universe to elementary particles, which are the root of the matter. For example, theoretical proposals that attempt to approach the grand challenges of science, such as the origin of our universe and the fundamental picture of the matter, consistently predict the existence of unknown elementary particles.

Thus, KEK is a world-class center for accelerator science. In connection with this, it occupies a globally dominant position as a place for the rapid development of measurement technology. However, the actual state of KEK's measurement technology is the fruit of individual researchers' heroic and artisanal efforts and cannot be said to be systematized. In this sense, KEK is not yet a center for measurement science. That is an obstacle that prevents further progress. To sublimate these explorations into a new phase, we are at a loss with the measurement technologies we have at hand, and we are in dire need of ideas for new measurement systems. Just as human activities

realize through the excellent coordination of organs such as the eyes, hands, and brain, the quantum field measurement system consists of sensors corresponding to the eyes, operating mechanisms corresponding to the hands, and computers corresponding to the brain. Suppose individual development research is integrated and reexamined from first principles under the most advanced systemology (systems science). In that case, it will be possible to invent entirely new devices and discover completely new physics. It will be an attempt to reconstruct experimental science from the perspective of "measurements." That will enable us to identify overlooked measurement possibilities and optimal solutions for measurement methods. As an example of interdisciplinary research of particle physics and condensed matter physics, we may discover that we can perform a better measurement using phonons for an object previously measured using electrons.

Thus, to achieve the goal of revolutionizing the exploration of the universe and elementary particles, **this proposal creates a new field of quantum field measurement systemology as a "science of means."** It will give rise to the next generation of basic quantum technology, which will be the foundation for solving mysteries in many fields, including the universe, subatomic particles, condensed matter, and life. Furthermore, in innovation, where people often lose their ways, it will serve as a reliable lighthouse to illuminate the way ahead and naturally lead to broader applications and returns to society beyond the application to basic science.

2) -1 -3 Comparison with other centers around the world

In KEK, there are about ten faculty members and ten technical staff members in the support group for collaborative research related to measuring instruments and low temperatures. Still, as mentioned above, KEK has not become a world center for measurement science. On the other hand, some of the world's leading accelerator centers for particle and nuclear research are also centers for measurement science. CERN's Middle Term Plan calls for large-scale development under the title of "R&D for future detectors" at the cost of 42.7 FTEs, or 48 MCHF (about \$60 million US) over five years (including labor costs). It has established itself as a hub for universities and research institutes in Europe and beyond. DESY in Germany, FNAL, and BNL in the U.S. are conducting extensive research in collider physics, astrophysics, and science using synchrotron radiation, similar to KEK. Each institution is actively developing its measuring instruments. Their future plans also indicate the importance of this development. They have established a test beam facility to provide beams to users worldwide, which is similar to what we are aiming for with this proposal. However, there is no example of an organization that integrates quantum field measurement and systems based on systemology, as in this proposal. With this proposal, we aim to create a major center that rivals these laboratories in terms of scale and will produce unique research. This scale will also allow for closer collaboration with other centers.

2) -2 Research objectives and plans

- * Describe in a clear and easy-to-understand manner by the general public the research objectives that your project seeks to achieve by the end of its grant period (in 10 years). In that process, what world-level scientific and/or technological issues are you seeking to solve? What will be the expected impact of the scientific advances you aim to achieve on society in the future?
- * Describe concretely your research plan to achieve these objectives and any past achievements related to your application.

The Standard Model of particle physics cannot solve four significant mysteries: The accelerated

expansion in the very early universe named inflation; The dark matter; The dark energy; The fact that the universe has no antiparticles and appears to consist of only particles. To solve these mysteries, theorists have predicted the existence of novel quantum fields such as inflaton, axion, and supersymmetric particles. **If we discover even one such novel quantum field, it will lead to the Nobel Prize in Physics.** This is a driving force of the center and the above research goals are set to this end. We perform the invention, development, and implementation of innovative quantum field measurement systems to achieve the above goals. Major examples include a new measurement system using quasiparticles, a new semiconductor detector with more than two orders of magnitude better radiation tolerance than the previous one, integration of new sensor development and integrated circuit development, automation of analog integrated circuit development, and a superconducting detector array for the LiteBIRD satellite. The PIs in charge of each research will prepare and proceed with clear goals and project plans for the next 5 and 10 years. It is in general hard to set an accurate and quantitative goals in 10 years from now. Considering the fact that a new invention from the center could be a game changer, it is nearly impossible to do it in our case. However, for example, the LiteBIRD satellite will likely to be launched before the end of the WPI grant period, and could make a big discovery. Also, 10 years is a reasonable amount of time from designing a new experiment to produce new results, which will give us more chances of big discoveries.

Of the seven goals mentioned in (1), six of them, except for human resource development, are described in more detail in the following (human resource development is described in 4-2).

2) -2 -1 Invention of new principles and measurement systems to search for theoretically predicted novel quantum fields

Invention of new measurement methods based on quantum field theory and advanced particle physics

The identity of dark matter, one of the greatest mysteries in physics, has not even been discovered yet, and innovative ideas that do not adhere to conventional search methods are needed. The situation is similar for novel quantum fields such as inflaton, axion, and supersymmetric particles. To overcome the current problem, we need to interact and integrate with other research areas actively. Until now, the linkage between condensed matter physics and particle physics has been overlooked. However, there are various quantum fields of quasiparticles in various physical systems, and these fields should coexist with the quantum fields of elementary particles in matter. The active use of quantum field properties in condensed matter systems, such as phonons, magnons, and axions in solids, can open up new horizons in the search for new particles. It is also possible to propose an ideal material design from the viewpoint of particle physics, use it as a completely new detector, or apply theoretical methods for elementary particles to understand condensed matter systems. This center will promote collaboration between condensed matter physicists and particle physicists and contribute to creating a new academic field. We will carry out this research in the spirit of exploring all cases without exception, using the systems science methods of experimentalists.

Development of new sensors and integrated circuits

Semiconductor detectors are one of the core measurement devices in particle physics. In this center, we will develop a new type of semiconductor detector with a radiation tolerance improved by more than two orders of magnitude compared to conventional sensors. It will enable particle physics experiments in harsher radiation environments. It will also lead to applications such as beam diagnostics for accelerators, which could not be carried out due to too high radiation levels, and the development of cameras that can withstand use in nuclear reactors. We have two directions in developing rad-hard technology for semiconductor devices. The first direction is to introduce new semiconductors such as CIGS to replace silicon. The CIGS sensors have been developed initially for solar cell applications. The CIGS can recover from radiation damage with compensation of the defects created by ions. It will be the first attempt to make a particle detector with CIGS focusing on the recovery features. We also plan to research the wide-gap semiconductor materials, such as diamond, GaN, AlN, to obtain a comprehensive understanding of the mechanism of radiation damage. The second direction is the development of the rad-hard readout chip. The RD53 Collaboration was established in 2013 to develop the next generation of pixel readout chips for the High Luminosity LHC detector upgrades. This work is nearing completion now. However, a new mandate is being articulated, which is to embark on a new technology development cycle leading to a further generation of pixel readout chips in a more advanced CMOS technology node of 28nm. CERN is pursuing this node as the next IC technology for leading-edge particle physics projects. We propose for this center to join RD53 as a new member institute. PI Garcia-Sciveres is the current co-spokesperson and co-founder of RD53, and PI Bortoletto is the lead of the most recent member institute of RD53 (Oxford). WPI will be the first Japanese member institute of RD53. This new generation chip can also be used for the newly developing semiconductor sensor.

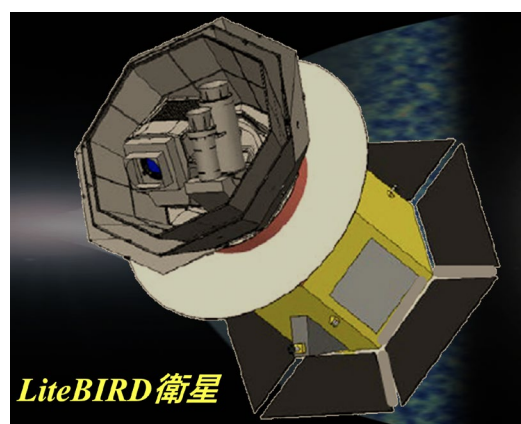
In cosmological observations, **superconducting detectors** have become a central measurement device due to the stringent observation performance requirements. This center will develop a new superconducting transition-edge sensor array with a unique design and cryogenic readout circuit to suppress the high level of cosmic ray-derived noise for use in space. Three PIs, Adrian Lee, Masashi Hazumi, and Masaya Hasegawa, will develop and evaluate the TES focal plane system for the LiteBIRD satellite project. One of the main obstacles at LiteBIRD is primary cosmic rays, which inject noise into the system. To mitigate the effect, we need to invent a unique design in which phonons, the quantum field of thermal vibrations created on the silicon substrate by cosmic rays, are efficiently blocked from the TES bolometers. Our team is leading the world in this particular application. Since this R&D is essentially "phonon engineering," it has a wide range of potential applications to other fields. We will also develop a new type of superconducting detector for X-ray observation and dark matter search. In addition to the above, we will invent new kinds of gaseous detectors with new readout, optical sensors, and scintillators with the cooperation of domestic and foreign researchers. One of the unrivaled features of this center is that it has access to a wide range of beam test facilities using KEK's various quantum beams. It will dramatically increase the efficiency and speed of the detector development described above.

Improving the performance of sensors requires improving the performance of **integrated circuits**

that process vast amounts of signals. We will invent a world-leading measurement system by integrating the development of new sensors and integrated circuits through a systems science approach. The RD53 mentioned above is an example. Another example, based on the concept of systemology, is the development of novel methods to create analog circuit designs and layouts for ASICs automatically based on requirements from experimenters. The bottleneck of ASIC development at the moment is the person-power of skilled ASIC designers. The automatic designer tool we develop will solve the problem and boost the design capabilities.

2) -2 -2 Development and implementation of a new quantum field measurement system in international projects such as the LiteBIRD satellite project and collider experiments, leading the world in the grand challenge of space and particle research.

We will develop a superconducting transition-edge sensor array system for the LiteBIRD satellite proposed by the director of this center and selected as JAXA's strategic L-class mission #2. LiteBIRD is a mission to explore the universe before the hot Big Bang. Because of its scientific excellence, it has been selected as a priority large research project in the Master Plan 2020 of the Science Council of Japan. It is also a project listed on the Roadmap 2020 of the Ministry of Education, Culture, Sports, Science, and Technology (MEXT.) In particular, LiteBIRD can test the inflation hypothesis, which states that a new quantum field called an inflaton caused the accelerated expansion of the universe. It is a project that tackles head-on the grand challenges concerning the universe, space-time, and elementary particles. This center will promote LiteBIRD as the flagship project. In addition, we will implement new quantum field measurement systems in international projects, including those at particle colliders.



2) -2 -3 Proposal and promotion of a new project based on a new quantum field measurement system

Based on the invention described in 2-2-1, we will launch an international project to search for a new quantum field. Since we do not know the optimal solution, systematic research starting from idea generation is necessary. Candidates include the axion search using magnons and the dark matter search using phonons. We will use the full power of this center to compare the merits and demerits of various ideas using a systems science approach. We will select projects with the best chance of success. We will promote this activity by a "good mix" of bottom-up, free-thinking by scientists, and top-down, system science.

2) -2 -4 Development of a new method of data analysis corresponding to the "brain" of the measurement system, and its application to cosmology and particle physics


Just as human activities realize through the coordination of organs such as the eyes, hands, and brain, the quantum field measurement system consists of sensors corresponding to the eyes, various operating mechanisms corresponding to the hands, and computers and software corresponding to the brain. The center will promote the analysis of data corresponding to the "brain" in the search for new quantum fields by making full use of a variety of data from cosmological observations to particle physics experiments. We will introduce new computational and informational methods that go beyond known methods in both new and existing experiments. We will implement them using the resources of the KEK Computational Research Center.

2) -2 -5 Establishing a new measurement science, quantum field measurement systemology, as a science of means through the above practices

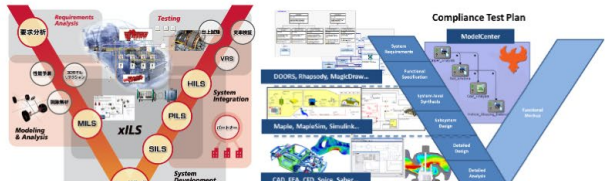
We will actively implement systems modeling languages and practice systems engineering methods in all our projects. The lessons learned will be fed back, and systemology (systems science) will be developed. The engineers of the Systemology Support Section will support this process and will also promote basic systemology research. The following figure shows the basic concept of systemology pursued at this center.

Systemology at QUP

- Goals
 - Invention: from "Art" to "Art and Methodological Approach"
 - Design: from "Experience-based Optimization" to "Mathematical and Requirements-based Optimization"
 - Development and Integration: from "Slow, Physical and Manual" to "Fast, Virtual and Automatic"
 - Outcome: from "Tacit & scattered knowledge" to "Explicit and aggregated knowledge"
- Tools
 - a) Virtual Engineering, b) Generative Design, c) Additive Manufacturing, etc.



- From "Document-based Approach" to "Model-based Systems Engineering (MBSE)" →
- Develop our own tools to aggregate all above (and GEANT4 etc.)



2) -2 -6 Employ researchers whose primary goal is to give back to society realize social implementation (smart cities, automated driving, medical care, etc.). At the same time, we will actively develop applications in other academic fields.

We pursue the application of semiconductor detectors to social infrastructure (smart cities), automobiles, and medicine. We will also develop academic applications of semiconductor detectors and superconducting detectors in fields other than cosmology and particle physics. Specific examples include: high-precision position detectors for structural biology; muon image detectors for muon

microscopy; high-sensitivity magnetic field measurement for brain measurement. We will also actively explore completely new developments in an invention-oriented way.

Our challenges include the realization of a non-contact shaft-bearing system, which will bring a drastic change in designs of various important building blocks having rotational structures, such as motors. There are two key technologies, i.e., (i) control of Casimir force and thermal emission, and (ii) quantum sensing having extremely high sensitivity. Casimir force arises from quantum and thermal fluctuations, and has been measured in a typical system consisting of two bodies with the gap distance less than a few microns. While all of previous measurements on Casimir forces have been conducted in equilibrium, Casimir force in non-equilibrium, where the bodies and the environment have different temperatures, is expected to significantly extend the degree of the control range since thermal emission occurs as an additional channel. We recently developed a theoretical framework for the control of non-equilibrium Casimir force, where thermal emission occurs, in a two-body system as shown in the figure below.

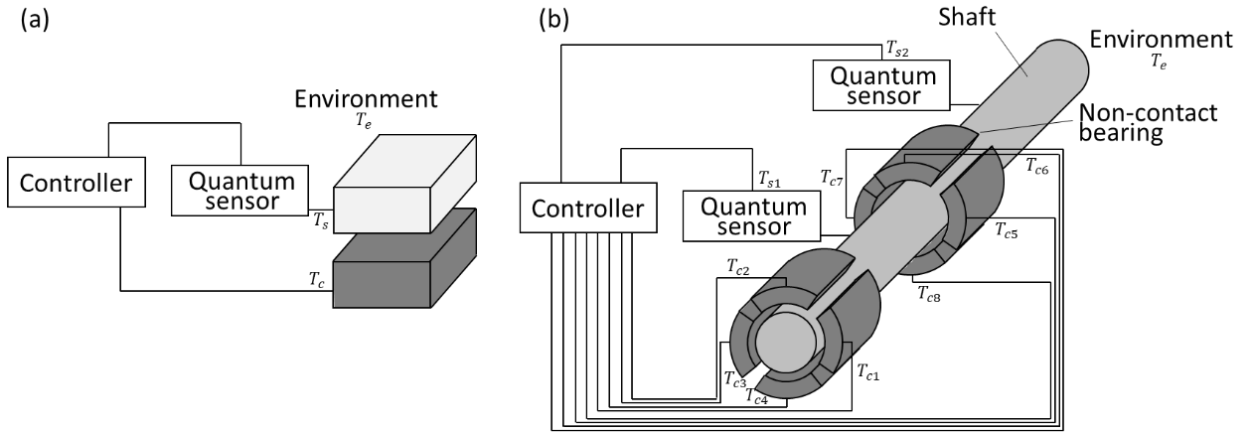


Fig.(a) Control of non-equilibrium Casimir force in a two-body system, where thermal emission occurs.
(b) Non-contact shaft-bearing system enabled by manipulating Casimir force and thermal emission.

The top plate can stay at a distance away from the bottom plate indefinitely, by detecting the temperature of the top plate and adjusting the temperature of the bottom plate, through the use of a control theory. In the system, the sensor needs high accuracy with a few tens mK for the temperature measurement, which is achievable by a quantum sensor. While a class of nitrogen-vacancy center in diamond has been mainly investigated for quantum sensors, we will develop silicon carbide based quantum sensors since silicon carbide technology has been well established in Toyota group companies, e.g., silicon carbide-based power devices have been installed in Toyota vehicles. In five years, we will measure non-equilibrium Casimir force in a typical two-body system for the first time in the world. In ten years, we will experimentally demonstrate a non-contact shaft-bearing system (Fig. 1b). Quantum sensors detect temperatures $T_{s1,2}$ in a few spots on the shaft, and the controller may determine the temperature T_{c1-8} of each piece of the bearings. Simultaneously, we will find possible application scenarios in the space industry, the mobility industry, and future cities such as Toyota Woven City, and show a few experimental demonstrations.

2) -3 System for advancing the research

- * Describe the center's research organization (including its research, support and administrative components) and your concept for building and staffing the organization. Describe your concrete plan for achieving the center's final staffing goal, including steps and timetables.
- * Describe your concrete plans (steps and timetables) for achieving the center's gender-balance plan. The plans should be divided into the following two categories, describing each:
 - a. plans at the executive level including the center director and administrative director
 - b. plans among principal investigators (professors, associate professors) and other researchers
- * If the center will form linkage with other institutions, domestic and/or foreign, *by establishing satellite functions*, provide the name(s) of the partner institution(s), and describe their roles, personnel composition and structure, and the collaborative framework with the center project (e.g., contracts to be concluded, schemes for resource transfer).
- * If the center will form linkage with other institutions, domestic and/or foreign, *without establishing satellite functions*, provide the names of the partner institutions and describe their roles and linkages within the center project.
- * Appendix 5: "List of Principal Investigators" (If there are changes from the PI list in the first screening application documents, describe the points changed and reasons.) (to be attached)
- * Appendix 6: "Biographical sketch of principal investigator" (to be attached)
- * Appendix 7: "Composition of personnel in center" (to be attached)
- * Appendix 8: "Letters from researchers invited from abroad or other Japanese institutions expressing their intent to participate in the center project" (to be attached)

Prof. Hazumi, the prospective director of the center, has a world class record in both particle physics and experimental cosmology. He has more than 40,000 citations and has given 22 invited talks at international conferences in the last 5 years. He is also a member of the selection committee for the International Conference on Superconducting Detectors of the International Society for Optical Engineering (SPIE). He is also taking a leadership role as the world PI of the LiteBIRD satellite project, which has about 300 researchers from 12 countries. It is no exaggeration to say that his time is 100% used for the Center. Even when he is not physically present at the Center in KEK, his effort will be engaged for activities as the world representative PI of LiteBIRD, the flagship project of the Center, activities at three satellites, and promotion activities of the Center at international conferences and other research institutes around the world. Regarding his FTE management, in view of his role as the face of the center, and as the LiteBIRD project progresses in the future, necessary corrections will be made promptly.

Prof. Hanagaki, the prospective deputy director of the center, has a deep knowledge of semiconductor detectors and is working on the world's largest international project (ATLAS experiment.) He has also led the construction of a new test beamline at KEK, and serves as the head of the KEK Instrument Development Office. He is appointed as Deputy Director of IPNS in April 2021. He will be the core of the close collaboration between this center and IPNS. **Prof. Tokushuku, the prospective administrative director**, has a wealth of experience as the former director of IPNS and personal connections cultivated through large-scale international projects (ZEUS, ATLAS). He makes full use of this experience to manage the administrative department of the center.

In selecting PIs, we chose researchers who are consistent with the center's mission, identity, and goals. Priority was given to the highest level of competence. Diversity was also taken into consideration, and the ratio of female PIs is approximately 40%. Prof. Lee of the University of California, Berkeley, is a pioneer of superconducting detectors for CMB observations. He has been collaborating with Prof. Hazumi for more than ten years. Prof. Bortoletto, famous for her development of semiconductor detectors, is Head of the Particle Physics Department at University of Oxford and

Deputy Coordinator of the EU detector development project AIDA. She has more than 190,000 citations in academic papers and is the editor of the journal "Nuclear Instruments and Methods." Dr. Garcia-Sciverse is a Senior Research Scientist at Lawrence Berkeley National Laboratory. He is world-renowned for his work in instrument technology for particle physics experiments. He has served as Deputy Director of the Berkeley Center for Particle Physics and Principal Investigator of CERN's RD53A instrument development project, where he led the development of ASICs for silicon detectors. The domestic PIs were selected based on a balance of world-class researchers and young researchers who are just emerging. Prof. Yamazaki is a member of the Science Council of Japan. Prof. Nakahama (Fumiko Yonezawa Prize, Toshiko Yuasa Prize) and Dr. Hasegawa (Breakthrough Prize in Fundamental Physics) are award-winning researchers. Prof. Miyahara is a distinguished researcher of the MEXT and an editorial board member of essential journals (editorial board member of the English journal of the Institute of Electronics, Information and Communication Engineers (IEICE), etc.). Moreover, one of the PIs, Dr. Iizuka of Toyota Central R&D Labs, is an enterprising researcher in engineering. He has made achievements in low-noise communication technology, wireless power transfer technology, etc., in the challenges of automated driving and smart cities, a collection of advanced technologies. We expect that his group will contribute to novel sensing technologies and their applications at this research center. The average age of the PIs is 47 years old, making them a strong group of researchers who are in the prime of their careers and can lead the world.

We have already started discussing with these PI candidates about the organization of the center. As for the support of external PIs, we can be flexible within the current KEK rules, from partial employment at this center on a cross-appointment basis to reward payments based on effort. Therefore, we can quickly start-up research as soon as this proposal is approved. The recruitment of researchers and postdoctoral fellows will be pursued, greatly considering the diversity of the centers. It is clearly stated in the code of conduct which was set up at the beginning of the centers. As already mentioned, the ratio of female PIs is approximately 40% at the beginning. Since April 2024, the value has decreased to 35% as we have a new male PI. We will keep at least 33% level by hiring one of three new PIs to be female.

We re-examined the target female and foreign researcher fractions and, already in the annual progress report in 2021, we increased the target values as shown in the table on page 13 (Female fraction: 22.4% -> 36%). This is a very ambitious target as the world average fraction is about 20% in a large international collaboration such as the ATLAS experiment at CERN. Unfortunately, as of March 2024, the value remains about 17% and it is not realistic to achieve this goal by April 2025, but we keep this ambitious plan as the final goal.

There is no female in the executive section. We will try to hire female executive members during the restructuring toward the mid-term point i.e., in April 2026, when the executive section members will be increased by adding deputy directors and deputy administrative directors.

The center will set up satellites at the Nanotech Lab of the University of California, Berkeley, and the JAXA Institute of Space and Astronautical Science to fabricate superconducting sensors. In addition, the center will place another satellite at the Toyota Central R&D Labs to vigorously promote efforts for

social implementation. MOUs will be signed with these three research institutes as soon as possible after the formation of the center. We will secure rooms for the satellites, make arrangements for the use of resources (sensor fabrication equipment, etc.), and hire researchers and technical staff for the satellites.

Six of the PI candidates belong to KEK (Yu Nakahama joined KEK as an associate professor on August 1st). It is also planned to hire four senior researchers (100% effort) as soon as possible. It is envisioned that these senior researchers will become new PIs as needed. These senior researchers will be 100% KEK affiliated. In addition, 100% effort CO-PI may be allocated to each overseas PI, who will be stationed at the Center in KEK for smooth cooperation. The existing building will be repaired and used as the main research building and experimental building of the Center. This experimental building is an excellent large facility created for the TRISTAN collider experiment. Through the large-scale repairs, researchers at the Center such as PIs, senior researchers, post-docs, and graduate students will attain the concentration and engagement of research power under one roof of the "non-virtual research center."

a) Principal investigators (full professors, associate professors, or other researchers of comparable standing)

* Paste onto table a) in Appendix 7.

	(persons)		
	At beginning of project	At end of FY 2021	Final goal (Date: April, 2023)
Researchers from within the host institution	5	5	5
Foreign researchers invited from abroad	3	3	3
Researchers invited from other Japanese institutions	5	5	5
Total principal investigators	13	13	13

b) Total number of members

* Paste onto table b) in Appendix 7.

	At beginning of project		At end of FY2021		Final goal (Date: April, 2025)	
	Number of persons	%	Number of persons	%	Number of persons	%
Researchers	20		20		67	
Overseas researchers	3	15.0	3	15.0	27	40.2
Female researchers	6	30.0	6	30.0	24	35.8
Principal investigators	13		13		13	
Overseas PIs	3	23.1	3	23.1	3	23.1
Female PIs	5	38.5	5	38.5	5	38.5
Other researchers	7		7		54	
Overseas researchers	0	0.0	0	0.0	24	44.4
Female researchers	1	14.3	1	14.3	19	35.2
Research support staffs	3		3		20	
Administrative staffs	26		26		25	
Total number of people	49		49		112	

2) -4 Securing research funding

Past record

* Give the total amount of research funding (e.g., competitive funding) secured by the principal investigators who will join the center project. Itemize by fiscal year (FY2016-2020).

The following is a list of competitive research funds and other research expenses that PIs participating in the Center have received in the past. (For Japanese researchers, indirect costs are included.

	FY2016	FY2017	FY2018	FY2019	FY2020	Total	Annual Avg.
Japanese PIs	204,101	154,687	192,488	135,532	163,267	850,075	170,015
Overseas PIs	250,041	627,283	932,448	865,181	798,009	3,472,963	694,593
Total	454,142	781,970	1,124,937	1,000,713	961,276	4,323,038	864,608
							(K yen)

Over the past five years, domestic PIs alone have earned approximately 170 million yen/year (including indirect costs), and overseas PIs have earned approximately 690 million yen/year.

Funding prospects after the establishment of the center

* Based on the past record, describe your concrete prospects for securing resources that match or exceed the WPI grant (FY2021-2025).

* Calculate the total amount of research funding (e.g., competitive funding) based on the amount of funding that the researchers will allocate to the center project. Be sure that the funding prospects are realistically based on the past record.

The following describes our plan to secure funding. The total number of staff at the center (executive members, researchers, and technical and administrative staff for research support) is 112. The allocation plan for this staffing and project promotion is shown below.

			(Thousand yen)											
			Financial resources	1st year	2nd year	3rd year	4th year	5th year	6th year	7th year	8th year	9th year	10th year	
				2021	2022	2023	2024	2025	2026	2027	2028	2029	2030	
P e r s o n n e l C o s t s	Director	WPI grant	7,500	15,000	15,000	15,000	15,000	15,000	15,000	15,000	15,000	15,000	15,000	
	Deputy Director	Funding from host institution	7,000	7,000	7,000	7,000	7,000	7,000	7,000	7,000	7,000	7,000	7,000	
	Administrative Director	WPI grant	10,000	20,000	20,000	20,000	20,000	20,000	20,000	20,000	20,000	20,000	20,000	
	Principal investigator	WPI grant	18,000	36,000	36,000	36,000	36,000	36,000	36,000	36,000	36,000	36,000	36,000	
		Funding from host institution	13,300	26,600	26,600	26,600	26,600	26,600	26,600	26,600	26,600	26,600	26,600	
	Researcher	Senior Researcher	WPI grant	0	24,000	48,000	48,000	48,000	48,000	48,000	36,000	24,000	12,000	0
			Funding from host institution	10,650	42,600	42,600	42,600	42,600	42,600	54,600	66,600	78,600	90,600	
		Postdoc	WPI grant	0	166,250	245,000	245,000	245,000	224,000	203,000	182,000	161,000	133,000	
		External Fund	7,000	35,000	35,000	35,000	35,000	56,000	77,000	98,000	119,000	140,000		
	Technical staff	Engineer	WPI grant	0	45,000	60,000	60,000	60,000	60,000	60,000	60,000	60,000	60,000	60,000
		Technician	WPI grant	0	26,250	35,000	35,000	35,000	28,000	21,000	14,000	7,000	0	
			Funding from host institution	21,000	42,000	70,000	70,000	70,000	77,000	84,000	91,000	98,000	105,000	
	Administrative staff	Head, QUP office	WPI grant	5,000	10,000	10,000	10,000	10,000	10,000	10,000	10,000	10,000	10,000	10,000
		QUP office full-time staff	WPI grant	10,500	21,000	21,000	21,000	21,000	21,000	21,000	21,000	21,000	21,000	21,000
			Funding from host institution	4,900	8,400	3,500	0	0	0	0	0	0	0	0
		QUP office part-time staff	WPI grant	24,000	63,600	63,600	63,600	63,600	63,600	63,600	63,600	63,600	63,600	63,600
	University Research Administrator		WPI grant	0	56,000	56,000	56,000	56,000	56,000	56,000	56,000	56,000	56,000	56,000
	Research Assistant		WPI grant	4,500	18,000	27,000	27,000	27,000	27,000	27,000	27,000	27,000	27,000	27,000
	C A P o s t i j e c t i v e s	Startup costs	WPI grant	42,000	36,000	-	-	-	-	-	-	-	-	-
Travel Costs		WPI grant	9,000	36,000	36,000	36,000	36,000	36,000	36,000	36,000	36,000	36,000	36,000	
Costs of Equipment		WPI grant	76,300	223,500	123,000	3,000	3,000	3,000	3,000	3,000	3,000	3,000	3,000	
Costs used at satellites		WPI grant	25,000	30,000	30,000	30,000	30,000	30,000	30,000	30,000	30,000	30,000	30,000	
Costs of international conference		WPI grant	5,000	20,000	20,000	20,000	20,000	20,000	20,000	20,000	20,000	20,000	20,000	
Rental fees for research space		Funding from host institution	23,300	46,600	46,600	46,600	46,600	46,600	46,600	46,600	46,600	46,600	46,600	
Facility usage fee		Funding from host institution	0	122,930	122,930	122,930	122,930	122,930	122,930	122,930	122,930	122,930	122,930	
research expenses		External Fund	100,000	300,000	300,000	300,000	300,000	300,000	300,000	300,000	300,000	300,000	300,000	
Public relations expenses		WPI grant	4,000	10,000	10,000	10,000	10,000	10,000	10,000	10,000	10,000	10,000	10,000	
Center director's discretionary expenses		Funding from host institution	50,000	50,000	50,000	50,000	50,000	50,000	50,000	50,000	50,000	50,000		
Financial resources			WPI grant	240,800	856,600	855,600	735,600	735,600	707,600	667,600	627,600	587,600	540,600	
			Funding from host institution	130,150	346,130	369,230	365,730	365,730	372,730	391,730	410,730	429,730	448,730	
			External Fund	107,000	335,000	335,000	335,000	335,000	356,000	377,000	398,000	419,000	440,000	
			Total	477,950	1,537,730	1,559,830	1,436,330	1,436,330	1,436,330	1,436,330	1,436,330	1,436,330	1,429,330	13,622,820

● From the WPI program: 6,555.2 million yen

① Personnel cost (corresponding to FTE for the center)

- For the director, administrative director, PIs, Co-PIs (tenured researchers outside KEK), postdocs
- Personnel expenses for three postdocs hired in Japan (but outside KEK) will be transferred to the appropriation from the host institution (i.e., external funds) every fiscal year after JFY R8 (6th year).
- Engineers and technicians to be recruited from domestic and overseas institutions.
- Full-time staff at the QUP office and URAs of the QUP Strategy Office
- Research Assistants (graduate students)

② Project promotion cost

- Start-up cost (excluding tenured researchers at KEK, 1,000 kyen/person, only for the 1st year)
- Expenses for international conferences

- Expenses for travels
- Expenses for equipment (infrastructure development for research, lease payments for copy machines, etc.)
- Expenses for operating satellites (Berkeley, JAXA, Toyota)
- Expenses for outreach
- **Sum of the appropriation from the host institution and external funds (KAKENHI etc.): 7,067.62 million yen**
 - ① Personnel cost (corresponding to FTE for the center)
 - For the deputy director, PIs and Co-PIs who are tenured at KEK
 - KEK's technicians
 - Members of KEK Administration Bureau who support the center
 - Under the leadership of Director General, KEK plans to sequentially allocate tenure positions in a timely manner for senior researchers and engineers and share labor costs.
 - ② Project promotion cost
 - Amount equal to the space charge for residential and laboratory buildings
 - Amount equal to fees for the use of facilities
 - Research funds (expecting 300 million yen/year)

As mentioned above, the domestic PIs of the center alone have received an average of approximately 170 million yen annually. Overseas PIs have received more. If we scale the amount with expected FTEs, we expect 140 million yen/year approximately. Thus 310 million yen/year is expected from PIs alone. Since we also expect contributions from the LiteBIRD-related budget and external funds obtained by other domestic researchers (senior members and postdocs), we are confident that we will achieve 300 million yen/year.
 - ③ Director's discretionary budget (50 million yen/year)
- **Responding to the gradual decline in subsidies after the sixth year**

After the sixth year, we will constantly review the priority areas of the Center's activities according to the scale of the gradual decrease in subsidies. We will further revitalize the Center's activities by employing postdoctoral researchers in areas where we can actively obtain external funding.

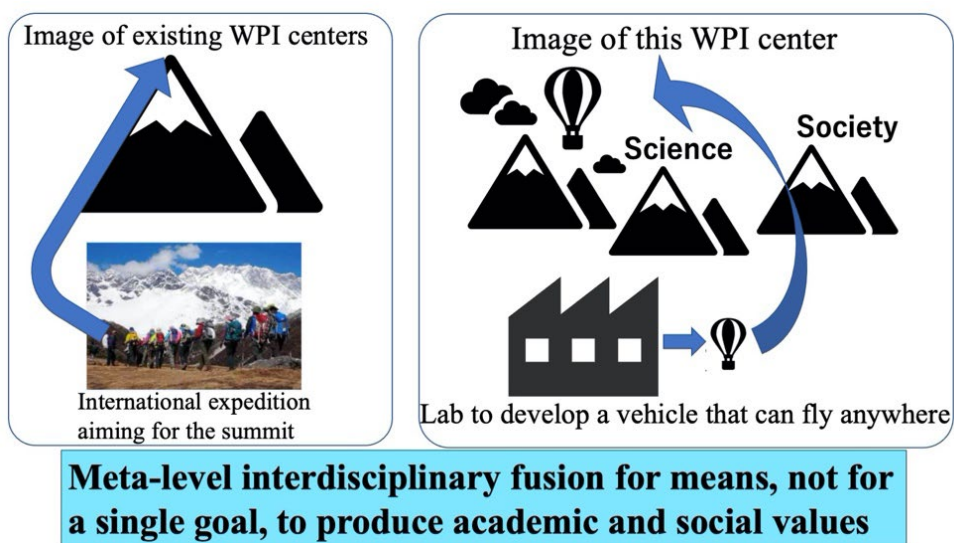
2) -5 Interdisciplinary research

* Describe the fused research domains, why interdisciplinary research is necessary and important in the target field(s), and what new field(s) can be expected to be created by way of this project. Describe your concrete strategy for fusing different research domains and creating new field(s) by the fusion.

In this center, researchers in particle physics, astrophysics, condensed matter physics, quantum beam science, measurement science, and systems science will come together to KEK, where outstanding research is advanced, and conduct interdisciplinary research and bring about innovations in quantum field measurement systems. One of our main goals is to solve the great mysteries of the universe, space-time, and elementary particles. Since there is no example in the world where interdisciplinary research on such a scale is carried out in an integrated manner, from invention to development to project implementation, the Center will become a world-leading center and further accelerate the interdisciplinary research. In our interdisciplinary research, mathematical and information science will play an essential role as the foundation and common language to support all activities.

Through interdisciplinary research at this center, KEK will be able to open up new research areas for KEK, which goes beyond its previous duties. For example, since this center will provide KEK with a solid foundation for research activities in astroparticle physics, it is expected that the scale of efforts so far will be greatly expanded. There are many research groups around KEK who are interested in various QUP activities. Collaboration with such groups is also beneficial, and the results of QUP can greatly support KEK's research as a whole. The research of this center, which creates a new eye called the quantum field measurement system, will be incorporated into the host organization, KEK, in this way as well.

This center will conduct interdisciplinary research on "means" or "methodologies." It is at the meta-level, leading to a new level of fusion of various research areas to produce not only academic but also social values. The new "eyes" will lead to applications in other fields, new social implementation, and social contribution. The figure below shows our basic idea. The existing WPI centers promote a fusion of researchers from various research areas who share the "goal" of solving academic mysteries. The research style of this center differs in that it brings together researchers from different fields in search of "new means." That will lead to breakthroughs in the studies of the universe, space-time, and elementary particles, but the "new means" will also generate application fields and social contributions beyond these goals.



The "extraordinary requirements" of particle and space projects lead to unique and disruptive innovations because they are not born from the needs of society. As for the concept of the future society, such as smart cities, smart factories, and automated driving, AI will utilize information collected from everywhere, social infrastructure, vehicle systems, and the people who use them. To innovate toward such a new society, ultra-sensitive sensor systems embedded in all kinds of things, which can measure at the quantum level, will be indispensable as the foundation of social infrastructure. If we take the relationship between space observation and automated driving/smart cities as an example, we see exciting similarities in the means. In automated driving, the frequency of millimeter-wave radar (79 GHz) needs to be further increased. On the other hand, LiteBIRD observes in higher frequency bands (up to 448 GHz), which opens up a possibility of technology transfer from space observation to automatic driving. On the other hand, LiteBIRD needs to suppress the

interference of radio waves communicating with the ground to the superconducting sensor for observation. It is essentially the same problem as the interference of many radio-wave sources in the smart city concept. Thus, it creates a research topic of transfer from social implementation technology to space observation. In this way, the fusion of different fields can produce entirely new developments.

In addition to activating the global collaboration of manufacturing laboratories by the three satellites (Berkeley, Institute of Space and Astronautical Sciences at JAXA, and Toyota Central R&D Labs), we will try to create partnerships with other WPI centers. One example is the collaboration with the Kavli Institute for the Physics and Mathematics of the Universe (Kavli IPMU) at the University of Tokyo, which studies the universe with mathematics and theoretical physics. Our attempt will be an evolution of the WPI centers as a group. Our center, which will lead the world in experimental science, and the Kavli IPMU, which leads the world in theory and mathematics, will be the two wheels of experiment and theory. We will also contribute to other WPI centers by providing the means of measurement systems, which will significantly contribute to the global presence of the WPI alliance.

3) Global Research Environment and System Reform

3) -1 System for advancing international research

- * Describe your concrete plan for building an international research center including the makeup of its foreign researchers, establishment of oversea satellites, or similar functions. Include a time schedule for the plan.
- * Describe concretely your strategy for staffing foreign researchers (e.g., postdoc positions) through open international solicitations. Describe the procedures you will use to do so.
- * Describe measures to help foreign researchers sustain and strengthen their activities under conditions when international exchange is limited.

The number of foreign PIs in the center is 3 out of 13 (23%), which meets the criteria. In addition, PIs of Japanese nationality are also actively engaged in international collaborative research. Therefore, with these core members, we can form an international center without problems. The center plans to set up a satellite in Berkeley in the first year.

Recruitment of KEK researchers is already underway internationally. From the beginning, this center will also conduct an internationally open recruitment process and actively recruit excellent foreign researchers. The PIs of this center are all active internationally. Taking the LiteBIRD satellite project promoted by the Director as an example, about 70% of the 300 members belong to foreign countries. We expect that many excellent researchers will come from abroad to make full use of these connections. It will naturally lead to a structure in which more than 30% of the researchers at this center are foreign nationals.

The center director and each PI will discuss the recruitment timing of the researchers. There is a possibility that we need to delay the recruitment due to the impact of COVID-19. On the other hand, it is essential to employ excellent researchers promptly in the worldwide competition. Therefore, we may hire researchers without coming to the center when hiring if they can start working remotely. This arrangement is possible since there is already such a case at KEK.

3) -2 Establishment of international research environment

- * Describe your concrete strategy for establishing an international research environment, administration system, and support system (e.g., appointment of staff and provision of startup funding) to accommodate researchers from overseas.

* Concretely describe how the center will provide an environment in which researchers can work comfortably on their research by being exempted from duties other than research and related educational activities, and how they will be provided adequate staff support to handle paperwork and other administrative functions. Include your procedure and time schedule.

* Describe your strategy, procedure and timing for periodically holding international research conferences or symposiums (as a rule, at least once a year).

The center will perform its duties in English and will hire and assign administrative staff who can handle this. In the first and second years of this center, start-up research funds will be provided to PIs to concentrate on their research. Administrative staff and URA in the QUP Office will take charge of Logistical tasks so that PIs can concentrate on their research. In principle, KEK duties other than research and education are not assigned to WPI researchers. In the first and second fiscal years of the center's accounting, the center will provide PIs start-up research funds to start their research as early as possible.

KEK hosts large-scale international collaborations such as Belle II and T2K and accepts many collaborators from Japan and abroad. Of the more than 8,000 visitors each year, about 2,000 are overseas. Therefore, we have one of the best foundations for an English environment in Japan. Compared to overseas research institutions, however, there are still areas for improvement. The QUP office will expand its support for overseas researchers. In addition, we will aim for synergistic enhancements by working closely with the International Office and the Joint Usage Support Office of KEK, which is in charge of user support, to provide support and convenience to researchers in their research and daily lives.

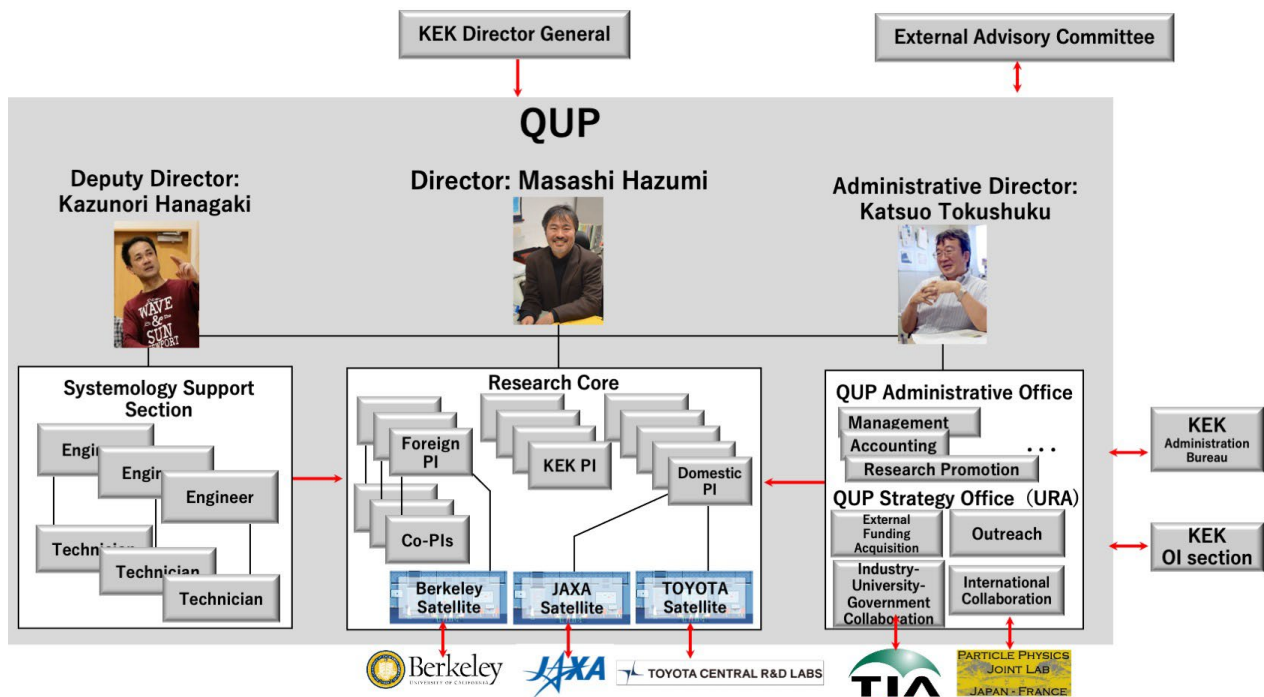
The center will hold international research conferences on a regular basis. Since it is difficult to organize a face-to-face conference in the fiscal year 2021 under the COVID-19 situation, we will hold a Kick-off symposium online to hear PIs' plans, discuss joint research among PIs and hot and emerging ideas in the fields. After that, we will hold the symposium every year, synchronizing with the external advisory committee meeting for the annual evaluation. Each time, we will set a theme that focuses intensely on several PIs research topics. We plan a combination of that theme and an overview of the research field.

3) -3 Center management and system reform

* Describe the role of the center director and the administrative director.

* Concretely describe your concept for establishing an administrative organization, the center's decision-making system and how authority is allocated between the center director and the host institution. (Describe concretely the mechanism for decision making when the person in charge of management and the person in charge of research and education are different, and describe the responsibility relationship between the two.)

* Concretely describe how the center will adopt a rigorous system for evaluating research and will introduce a system for merit-based compensation (e.g., annual salary scheme). Describe your procedures and timing for operationalizing these systems.



3) -3 -1. Decision-making mechanism

The organizational chart of this Center is shown above. **The KEK Director General** is responsible for creating the necessary environment for the Director of the Center to demonstrate leadership and coordinate the involvement of KEK researchers and administrative staff in the Center. **The Director of the Center** makes the final decisions on important matters such as personnel, budget, and research goals and policies. **The Deputy Director** is in charge of the systemology support section and is responsible for ensuring that systemology methods are implemented and take root in all projects under the goals and policies set by the Director. In addition, through the practice of this research, the deputy director and the Director of the Center will create a new academic field called quantum field measurement systemology. **The Administrative Director** has the responsibility and authority to expand strategic collaborations, plan and execute strategies for obtaining external funding, and conduct administrative tasks to realize the goals set by the Center Director. Each PI is responsible for determining the approach of his or her research group and for autonomous management, including the acquisition of external funding.

The operation of the center will be carried out with top-down approach by the Center Director's decision. Under the leadership of the Center Director, a "Center Steering Committee Meeting" will be held as needed (once a month, but more frequently if necessary). The meeting members include the Center Director, the Deputy Director, the Administrative Director, the PI representative, and the Systemology Support Section representative, to discuss critical operational matters such as personnel, budget, and research goals and policies. In this way, the deputy director, the administrative director, the research core, and the systemology support section will understand the director's goals and policies and work together as a whole. A "PI meeting" will be held periodically, in which members of the Center Steering Committee, all PIs, and Co-PIs(*) can participate to discuss resources needed for

research, etc. At PI meetings, PIs (or Co-PIs) will take turns to report on their research progress and discuss specific research collaborations among PIs. An "external advisory board" consisting of five prominent researchers from Japan and abroad will be established to evaluate the center's operation from a higher perspective and provide beneficial advice.

(*) The Co-PI system enables overseas PIs to work at the center even when it is difficult for them to travel abroad due to the corona pandemic; in case needed, overseas PIs may hire young researchers at the associate professor level as Co-PIs, and the Co-PIs will be stationed at the center to maintain a close relationship between the center and the overseas PIs.

3) -3 -2. Support divisions

We will establish (1) the Systemology Support Section, (2) the QUP Strategy Office, and (3) the QUP Office within the Center as research support organizations. (1) will be managed by the Deputy Director, and (2) and (3) by the Administrative Director.

The Systemology Support Section

This section provides systems engineering support and systems science support to PIs using systems modeling languages (such as SysML). Furthermore, through the lessons learned, this section will create a new discipline of quantum field measurement systemology under the supervision of the Director and Deputy Director.

The QUP Strategy Office

It is a URA organization responsible for strategically essential matters in the center's operation, such as acquiring external funds, industry-academia-government collaboration, international collaboration, and outreach. We consider industry-academia-government cooperation and international cooperation to be essential. We plan to connect with the Tsukuba Innovation Arena (TIA) established to accelerate the innovation in Japan for the former purpose. An example of international collaboration is the Toshiko Yuasa Laboratory (TYL), which Japan and France are promoting. The virtual laboratory was established in 2006 by KEK, CNRS/IN2P3, and CEA/Irfu, named after Dr. Toshiko Yuasa, a female physicist who went to France during and after World War II and made significant achievements in particle and nuclear physics. At TYL, we have collaborated in a wide range of fields, from detector technology to accelerator technology, from particle physics to cosmology. France has excellent human resources and technology levels in instrument science. Cooperation with France is also beneficial in this WPI initiative, and TYL and its future expansion will be incorporated as a component of this WPI initiative.

The QUP Office

The QUP Office is the dedicated administrative organization of this center. The head of the Office shall be a position equivalent to that of section chief. The work under his or her jurisdiction shall be classified into general affairs, accounting, and research cooperation. Each section shall have its

organization. The KEK Administration Office will provide full cooperation to ensure the smooth progress of these operations. The General Manager of the QUP Office will also participate in the Administrative Liaison Meeting (held once a month to share administrative matters and discuss important issues), composed of managers of the KEK Administration Office.

3) -4 Research environment

- * Concretely describe how equipment and facilities, including laboratory space, will be provided in a manner appropriate for a "world premier international center." Include your procedure and timing.
- * Describe measures taken with regard to the research environment to sustain and strengthen research activities under conditions when international exchange is limited.
- * Concretely describe how the center will consider to arrange for its researchers to participate in the education of graduate students.
- * Describe new measures to improve or abolish existing systems and practices in the host institution to optimize the center's research environment.
- * Concretely describe the plans by the host institution to provide a support system and to work toward improving the environment for achieving gender balance.
- * Describe your measures other than the above to ensure that world's top researchers from around the world can comfortably devote themselves to their research within an international and competitive environment at the center.

KEK has an unparalleled infrastructure for large-scale projects in basic research. A part of it will be offered free of charge to provide a world-leading research environment. Details are described in "6) Summary of Host Institution's Commitment.

There may be situations where COVID-19 severely restricts traveling. Even in such a case, one of the main features of this center is that it can make full use of its three satellites to carry out efficient development research. KEK has the world's most advanced DX/RX infrastructure, with a proven track record and expertise in continuing large-scale international cooperative experiments such as the B-factory, even in difficulties due to COVID-19. The infrastructure and experience will be fully utilized in this center as well.

In order to contribute to the realization of international brain circulation as one of the world's leading research centers, the center will optimize its systems and practices as much as possible and build a system that allows researchers from overseas to devote themselves to their research without feeling uncomfortable. Since this center will adopt a top-down organizational structure different from KEK as an inter-university research organization, it will require a system separate from the existing system of KEK. Specifically, the following points should be satisfied.

- As a system to ensure the leadership of the center director, a "center conference" will be established with a small number of center staff as described in 3)-3-1. The center director and members of the meeting will discuss important matters, including personnel and budget, to support timely decisions by the director.
- Take measures to allow special operations for the Center in salary and employment, using the existing system of specified fixed-term employment.
- English should be the official language for both research activities and administrative work at the center. Further work on the English environment is also discussed in 3)-2.

KEK needs to improve the gender balance and the following actions are being made, as examples.

- Partly conducting female-only open recruitment

- Education programs for female high school students
- PR for recruitment of female engineers

It is in discussion that the number of tenure positions promised to the QUP after the 5th year can be increased with the female-only position.

KEK has restructured the section on diversity, equality, and inclusion (DE&I) since April 2024. The QUP director is a member of the DE&I committee, and the deputy director is a member of the working group. KEK and QUP collaborate on improving diversity. The action plan for the section will be made in FY2024.

4) Values for the Future

4) -1 Generating and disseminating the societal value of basic research

* Describe concretely and quantitatively the center's policy for widely disseminating the results of its basic research to the general public.

Research that explores the limits of space, time, and subatomic particles awakens in public a sense of wonder that transcends science. For example, suppose the LiteBIRD satellite project, which this center collaborates with JAXA, detects the signal of inflation. In that case, it is said to be the "greatest discovery in the history of science," surpassing the two Nobel Prizes in physics awarded so far for the observation of the CMB. Its intellectual value to humankind is immeasurable. (Evidence: Report of the review committee organized by Prof. Weiss, a laureate of Nobel Prize in Physics:

<https://arxiv.org/abs/astro-ph/0604101>.) If the results are different from the predictions, that may even transform humanity's worldview. When Super-Kamiokande announced its discovery of neutrino oscillations, U.S. President Clinton said in a speech the day after the announcement, "The discovery will have an impact on society as a whole, not just in the laboratory." We expect that LiteBIRD's observation results have a similar or even more significant impact. **If Japan can take the lead in creating such intellectual value again, it will bring confidence and pride to the people of Japan.** It will also contribute significantly to the country's continued existence as a first-class country, distinguished by other countries. The center will also collaborate with JAXA ISAS, Kavli IPMU, AIST, and other participating institutions to share such intellectual values with the public through web outreach, lectures, public presentations, and SNS. The URA and administrative staff will be in charge of outreach for continuous dissemination.

4) -2 Fostering next-generation human resources linked with higher education

* The center offers an opportune platform for establishing a research system in which new interdisciplinary domains can be created within a rich international environment. Describe concretely and quantitatively the initiatives to be taken to foster young researchers, including doctoral students, through participation in such a research system within the center.

* Describe your plans for fostering researchers with a view to achieving gender plans, and your plans for conducting domestic and international promotion activities to attract female researchers to the center.

The educational goal of this center is to develop the next generation of talents who are proficient in systems science and have deep expertise in specific fields. By learning about sensors, ASICs, computers, data analysis, and the systemology that integrates them at this center, young researchers will become scientists who can play an active role in academic posts and a wide range of industries. The center will provide training and career development support at each stage, from graduate student to post-doctoral fellow to tenure-track/tenured faculty, as described below.

Graduate students

The host institution, KEK, has been practicing graduate education in Japan and abroad through the Graduate University for Advanced Studies (SOKENDAI) and the Special Joint Research Fellowship Program for graduate students. In addition, a research assistant (RA) system is in operation to support these graduate students. In cooperation with KEK, we will improve the system so that researchers at this center can accept and educate graduate students. In addition, we will build an educational program for domestic and foreign students as well as Early Career Researchers beyond the Japanese graduate school system. We will create teaching materials that systematize quantum field measurement as a system science and hold annual quantum field measurement systemology training and practice courses for graduate students in elementary particles, cosmology, measurement science, and related fields. In the past, KEK has held a large international school, EDIT, with participants from 23 countries and has experience in holding many international schools. KEK also has a strong network with domestic and international research institutions. We will make full use of them to implement the project. As mentioned in 3-2), TYL focuses on expanding and fostering female researchers through the Women in Science Camp and the Toshiko Yuasa Award. This center will also contribute to expanding diversity in basic science in Japan through collaboration with TYL.

Unlike the cases in US and Europe, graduate schools in particle physics and related communities in Japan have not been producing a good number of dissertations on novel sensors and their systems despite their importance. QUP will be a game-changer and will contribute significantly to promoting instrumental science in general.

Young researchers

We will dispatch young researchers to the Berkeley Satellite for an extended period to foster researchers with an international perspective through the experience of "living under the same roof." The center will provide opportunities for young researchers to present their research results actively. In addition to the international research meetings of each research unit, the center will hold an international research meeting (QUP Symposium) involving the entire center to promote interdisciplinary research at least once a year. As part of our international career support, we will support young Japanese researchers to obtain research positions at partner institutions of international joint experiments such as LiteBIRD. By doing so, we will achieve long-term brain circulation. In addition, the center will establish a mentoring system by senior researchers for young researchers. It will provide strategic and psychological support to help young researchers obtain tenure-track/tenured positions at universities and other institutions and positions in industry where they can use their abilities.

Diversity, Equality and Inclusion

The importance of the diversity in the center is clearly stated in the code of conduct:

"All members and visitors of QUP understand the international standards for human rights, including the Universal Declaration of Human Rights by the United Nations.

Members and visitors will treat each other with respect. To build a good environment, we should care for others as we care for ourselves. We do not tolerate harassment or abuse that violates individual dignity. We will avoid inappropriate actions, statements, or discriminations, including those based on

race, ethnicity, age, gender, sexual orientation, disability, marital status, or nationality. As human beings, we cannot be perfect. We can all make mistakes even when we don't intend to. The important thing is to update our perceptions so that we respect each other in a better way. The concept of harassment itself has also evolved and will evolve. All members and visitors agree to make a sincere effort to keep updating the way we think so that we can act better.”

As one of the plans to improve the working conditions for the researchers with various constraints, a system will be set up to assign a dedicated research assistant or support staff for a year or so upon request to support researchers in parental or other care. We foresee this will have a good impact also on the promotion of female researchers.

4) -3 Self-sufficient and sustainable center development

* The center needs to become self-sufficient and sustainable after the funding period of 10 years. Describe the host institution's mid- to long-term plan and schedule for supporting the center development, including the reform of the host institution's organization, the provision of personnel with priority allocation of tenured posts to the center, fundamental financial support, and material support including land and buildings.

KEK will position this center as a unique organization that contributes to forming world-class activities and as an independent research organization distinguished from other research organizations within KEK. KEK will use the activities of this center as a springboard for interdisciplinary fusion and organizational reform at KEK. By becoming a center for interdisciplinary research, it is expected to create new research fields and further enhance the function of KEK. KEK will provide the necessary support to ensure that the center remains a world-class research center after the implementation period of this program is over. To that end, KEK will find the best way to reorganize roles between the KEK's existing institutions and QUP to continue QUP's function. Specific measures include positioning the center as one of KEK's research centers and maintaining the mission and identity of the center. Toward the establishment as a permanent organization after 10 years, KEK with a leadership of the Director General will assist the center to have its own financial base. Along this line, KEK will proceed toward the upgrade of the necessary facilities and acquiring the tenure positions for senior researches and technicians gradually after the sixth year.

Following the recommendation from the program committee after the startup of the QUP, QUP and KEK extensively discussed support plans for making QUP a sustainable institute beyond the WPI funding period. KEK recognizes that the QUP is a key institute for KEK to explore a new direction for future research through the revolution of measurement science. KEK reiterates that it creates a concrete financial plan for the permanent establishment of QUP. We estimate that QUP needs more than 400 million yen to maintain the proposed level of activities after the 10th year. Requesting QUP to aggressively seek external funding of about 200 million yen for the programs it promotes, KEK promises to cover the remaining more than 200 million yen to establish the permanent institute in KEK.

Center Director's Vision

As a researcher, I can hardly contain my excitement at the thought of the realization of this research center. My research style is to unravel the great mysteries of particle physics and cosmology using new measurement methods. In particle physics, I led the discovery of CP violation at the KEK B-factory, for which I received the 4th JSPS award from the Japan Society for the Promotion of Science. The discovery led to the Nobel Prize in Physics for Profs. Kobayashi and Maskawa. In experimental cosmology, I formed the POLARBEAR project team in Japan and succeeded in the first observation of gravitational lensing effects using polarized cosmic microwave background (CMB) alone. In each case, I felt as if I had touched the depths of nature with my bare hands. The memory of my excitement is still vivid. The source of the excitement I mentioned at the beginning of this note is the conviction that this center will bring about discoveries beyond the achievements mentioned above.

KEK promotes the mission of solving the mysteries of the universe, subatomic particles, and life by using particle accelerators. It is already recognized worldwide as an international center for accelerator science. Why is it necessary to propose a new center? What should we do to lead the world beyond other accelerator centers, such as the European Organization for Nuclear Research (from now on referred to as CERN)? I propose this center because I believe that further innovation is necessary for three reasons as follows.

The first point is that **KEK, an international center for accelerators, needs to become a global center for measurement systems.** Unfortunately, Japan is lagging in measurement systems at the forefront of space observation and particle experiments, and we are relying on the most advanced measurement systems of foreign groups for various projects. Even at KEK, the development of a measurement system to precisely observe particles produced by the accelerator has relied on individual researchers' heroic and artisanal efforts. On the other hand, international accelerator centers worldwide have already taken a more organized, strategic, and interdisciplinary approach.

Second, we need to work on new and essential research to solve the mystery of the universe, subatomic particles, and life. We do not need to tie ourselves to an accelerator to this end. Under the banner of the search for cosmic connections (the connection between the universe and elementary particles), CERN's strategic cooperation with projects such as the Antiparticle Cosmic Ray Observatory (AMS) has produced significant results in space observation. On the other hand, at KEK, space observations are still a kind of "private stores" operated by individual researchers, including myself. Some institutions conduct astronomical and space observations in Japan, but they lack the perspective of space observation that can elucidate the mysteries in particle physics. Now that the universe and subatomic particles are more closely related to each other than ever, I believe that the next scientific revolution is likely to come from cosmic connections. In order not to miss the chance of discovery, we need to take immediate action.

Third, the world of detectors is undergoing a revolution, and urgent action is needed. In recent years, new detection principles using various quasiparticles and new sensors using quantum effects have been proposed. Existing detectors, such as semiconductor detectors, also need to be upgraded to meet the requirements of the next-generation experiments. History has proven that new detector systems are the key to opening up new research in cosmology and particle physics. **These new detectors and sophisticated detector systems are collectively called "quantum field measurement systems" in this proposal. It is a new concept with two meanings: one is to measure the new quantum fields, and the other is to measure "with" quantum fields, including various quasiparticles.** The term "measurement system" means the entire device, which includes the sensor itself, the integrated circuit that extracts the signal and the computer that corresponds to the "brain" in humans.

In a nutshell, I sum up the above as **"whoever rules the quantum field measurement system rules the research on the universe and elementary particles."** With this in mind, my vision for this center is as follows.

The primary vision is to form an unparalleled research center on measurement systems for cosmology and particle physics, where we carry out everything from the invention of principles to the execution of large-scale projects seamlessly, and to lead the world at a stroke [Center's Identity I]. International accelerator research institutes that rival KEK, such as CERN and Fermi National Accelerator Laboratory in the U.S., have their detector development groups. Still, there is no single center that can take a project from idea to execution. **This center, which will be the only one of its kind globally, will be a "full-fledged move" for Japan to take the lead in the competition with CERN and others in the field of measurement systems.** This center aims to be a place that promotes inventions for quantum field measurement systems that realize the dreams of research. Our goal is to create a measurement system that will meet the grand challenges of science rather than improve the system to pursue immediate results. We want to develop ideas magnitude better than those of the past. We lead to significant discoveries by providing an environment where researchers can build ideas and have sufficient research time at this center [Center's Goal 1]. One example of research that excites me is the systematic and exhaustive study of the interaction between the theoretically-predicted quantum fields of novel elementary particles and the various quasiparticles in the matter. It will lead to the invention of a new quantum field measurement system. Until now, the connection between condensed matter physics and particle physics has been

Center Director's Vision

overlooked. However, there are various quantum fields of quasiparticles in different physical systems. These fields should be inextricably linked with the quantum fields of elementary particles in the matter. It is a vast and untouched research area, and this center will be engaging in the first thorough systematic research. The Standard Model of particle physics cannot solve four significant mysteries: The accelerated expansion in the very early universe named inflation; The dark matter; The dark energy; The fact that the universe has no antiparticles and appears to consist of only particles. To solve these mysteries, theorists have predicted the existence of novel quantum fields such as inflaton, axion, and supersymmetric particles. **If we discover even one such novel quantum field, it will lead to the Nobel Prize in Physics.** I hope that this center will become the "birthplace" of future great discoveries.

In the spirit of the end-to-end research from invention to implementation mentioned above, the quantum field measurement system invented at the center will be implemented in actual projects for cosmology and particle physics [Center's Goal 2]. One example is the LiteBIRD satellite project, which aims to explore the Universe before the Big Bang and get closer to the fundamental physical laws behind it. It is a project that I proposed, and I serve as the global PI. My group is currently developing an innovative superconducting detector array with a group in the U.S. to convert the incoming CMB photons into phonons and read them with a SQUID. It is an example of a new detector using quasiparticles. This center will promote it as the flagship project. We will also propose and encourage projects for new cosmological observations and particle physics experiments based on the invention of a new quantum field measurement system [Center's Goal 3]. As already mentioned, new sensor technologies are emerging recently. We will propose new experiments by using them. Among them, we will carefully select and promote those that have the best chance of success. In addition, we will encourage the application of the new quantum field measurement system to the upgrades of existing accelerator experiments. The term "measurement system" includes data analysis methods that correspond to the human brain. The center will also aim to invent new analysis methods [Center's Goal 4].

This center will conduct **interdisciplinary research on "means" or "methodologies," not for specific research topics in particle physics or cosmology alone.** It is at the meta-level, **leading to a new level of fusion of various research areas to produce academic and social values [Center's Identity II].** The new "eyes" invented and developed at this center will undoubtedly be applied to other fields and create new social implementations and social contributions. This center will promote such social contributions by establishing a satellite at the Toyota Central R&D Labs for collaboration instead of leaving it to others [Center's Goal 5]. In addition, with the vision of global collaboration of manufacturing laboratories, we will establish two more satellites (Berkeley and JAXA) to promote collaborative development.

I want to emphasize that the above vision is based on KEK's strengths listed in the following:

- Demonstration of the measurement system can be done using the **various quantum beams provided by KEK's accelerator facility** [Center's Identity III].
- The experience and capabilities as a host of large-scale international joint experiments [Center's Identity IV].
- The extensive global human network and abilities as an inter-university research institute cultivated so far [Center's Identity V].

KEK, which already has one of the best infrastructures in the world, will establish a new WPI center by concentrating all its efforts, and it will be an unrivaled international research center. **As the overall leader of the LiteBIRD satellite project, I will make full use of my experience as a leader of about 300 researchers from 12 countries to manage the WPI.**

We want to take a systems science approach to the development of quantum field measurement systems. The systematic introduction of systems engineering and systems science (systemology) will serve as a base for building up the development process as an intellectual foundation. Recent satellite development has shown that the systematic introduction of modeling languages accelerates the accumulation of know-how as projects are described in modeling languages rather than in documents. This center will apply this method to basic science projects and generate a significant expansion of knowledge in 10 years. **Ultimately, we want to create a new field of quantum field measurement systemology as a "science of means."** This center will nurture the next generation of researchers proficient in using systems science and have deep expertise [Center's Goal 7].

Finally, I would like to describe my dream. My dream as a researcher is that the activities of this center will result in three Nobel Prizes in physics in the future. LiteBIRD will take off. A new experiment will start to search for novel quantum fields. The next Georges Charpak (Nobel Prize winner in Physics for developing a detector) will be born from this center. Finally, my dream as a person is that the research of this center will become the foundation for the happiness of humanity.

Host Institution's Commitment

Date 1st April 2024

To Ministry of Education, Culture, Sports, Science and Technology

High Energy Accelerator Research Organization (KEK)
Director General Dr. Shoji Asai

I confirm that the measures listed below will be carried out faithfully and concretely as follows regarding "International Center for Quantum-field Measurement Systems for Studies of the Universe and Particles" (hereinafter referred to as "Center") if it is adopted under the World Premier International Research Center Initiative.

Concrete Measures

- Describe the concrete measures that the host institution will take to satisfy the following requirements.

1) For the center to become a truly "world premier international research center" and independent by the time WPI support ends, the host institution must clearly define the center's role within its own mid-to-long-term strategy and provide its comprehensive support from the time that the funded project starts.

※Describe the center's role within host institution's own mid-to-long-term strategy.

KEK is the top-class accelerator research institute in the world with its unique high energy accelerators serving for vast area of interdisciplinary research including particle and nuclear physics, material science, biology, and even archaeology. KEK is best to place a new center on innovative measurement systems, as the Center can utilize the KEK's infrastructure effectively and have a close contact with its user communities. Development of measurement systems is also a key subject for KEK's various researches as well as being able to accept the top-down organization that is completely different from inter-university research institute structure, thus the mutual benefit is clear and the synergy are highly expected.

As one of the Inter-University Research Institutes, KEK provides a wide range of research platforms for domestic and international researchers. The KEK Roadmap and following KEK Project Implementation Plan (KEK-PIP) describe the institute's research plan in mid-term. The KEK Roadmap was updated in May 2021, and the importance of the detector R&D is clearly stated. Once this WPI is adopted, KEK will further clarify its commitment in KEK's mid-term plans.

KEK will comprehend the WPI's progress based on the Center's annual report and suggestions from program committee and working group members who receive follow-up. In the process, as several packages where the stronger collaborations may emerge, KEK will update the commitment accordingly. KEK's Open Innovation Promotion Department will tightly collaborate for the spin-off from the Center for the wider science community and for the industrial and sociological applications.

2) Provide a mid-to-long-term policy for amending the plan on the direction of the host institution's organization and operation, one that includes the reform of the institution's existing organization in ways that will achieve the center's independence and create a permanent place for it within the organization. A concrete plan and schedule must be set and carried out for restructuring the host institution's organization.

※Describe both a mid-to-long-term policy for amending the plan on the direction of the host institution's organization and operation and provide a concrete plan and schedule.

This Center will be set up as special organization in KEK, independent from the existing institutes and laboratories, in order to support its potential to be the world-class international center.

In the first fiscal year, KEK will support the establishment of general rules and regulations for the Center, including its autonomous institutional structure, recruitment procedure and researches commitment on research and education, so that the Center can effectively start its activities with newly hired researchers in early second fiscal year. As KEK already has flexible systems on the recruitment, salary, and personal evaluation which can be a basis to create the Center's rules and regulations so the organizational preparation can be implemented without delay.

Toward the establishment as a permanent organization after 10 years, KEK with a leadership of the Director General will assist the Center to have its own financial base, in the same way with other KEK research projects. Along this line, KEK will proceed toward the upgrade of the necessary facilities and acquiring the tenure positions for senior researches and technicians gradually after the sixth year.

Following the recommendation from the program committee after the startup of the QUP, QUP and KEK extensively discussed support plans for making QUP a sustainable institute beyond the WPI funding period. KEK recognizes that the QUP is a key institute for KEK to explore a new direction for future research through the revolution of measurement science. KEK reiterates that it creates a concrete financial plan for the permanent establishment of QUP. We estimate that QUP needs more than 400 million yen to maintain the proposed level of activities after the 10th year. Requesting QUP to aggressively seek external funding of about 200 million yen for the programs it promotes, KEK promises to cover the remaining more than 200 million yen to establish the permanent institute in KEK.

3) Provide sufficient support for carrying out the center's operation and research activities, including necessary personnel, financial, and system support.

KEK will support allocating human resources for setting up rules and regulations on important issues of the Center's operation, such as the budget and staff recruitment, in which the Center director makes the major decisions. The director is, therefore, able to take a leadership to carry out its operation and research activities. Details are described in following section 5).

KEK will make a following initial support to the Center in human resource:

- A deputy director of the Center;
- PIs and Co-PIs who are tenures of KEK;
- Technical and engineering staffs; and
- Administrative staffs in KEK Administration Bureau

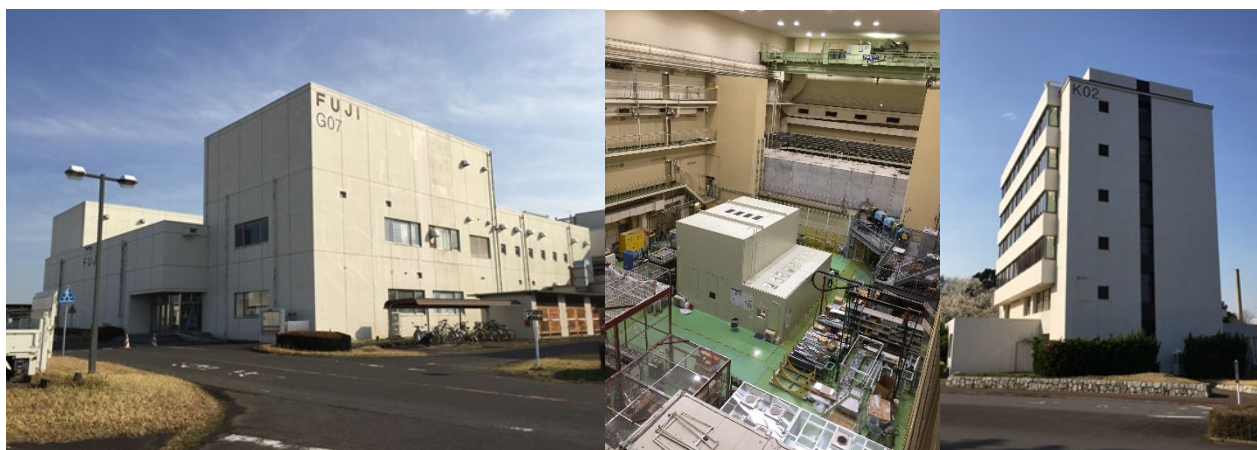
Some of the staffs will be partially working for the Center. Especially for the technical and administrative staffs, concurrently working both for KEK and the Center is important in the point of the continuity of the work and the human resource circulation between the two, and will also contribute to work efficiency. As stated in the above section, KEK will support to obtain tenure positions for technicians in the later stage of the 10-year program.

KEK will make a following financial support, such that the sum from the KEK support and the external

resource is equal or more than the support from the WPI fund. Here is the main summary

- Human resource stated above (according to their effort)
- Discretionary budget for the Center director
 - KEK offers annual 50-million-yen budget which the Center director can use flexibly to accelerate the research with their leadership.
- Facilities
 - Office space (~1,000 m²)
 - Laboratory space (~2,000 m²)
 - Non-charge usage for the KEK facilities such as its accelerators and test beam facilities

Following photos show the candidate location for the office and lab space. They are currently used for various purposes and KEK will arrange for the reallocation.



In addition to this, though this is not for exclusive use, KEK has a large-scale dormitories and apartments with English-speaking staffs at the front desk full-time. These facilities will help to support the social life of the WPI researchers and its visitors. Especially a new dormitory No. 5 which will have 68 rooms is under construction and will be operational in April 2022. Total capacities including the apartments will become 240 rooms.



Dormitory No.5

- 3 stories building
- Total floor area: Approximately 1,700 m²
- Private room type (68 rooms, with unit bath and toilet)
- Construction period: June 2021 (scheduled) -March 2022
- Start of operation: April 1, 2022

- 4) Provide for the independent operation of the center even after the WPI grant period ends. Provide necessary support to include the long-term provision of personnel, facilities, equipment and other resources needed to establish the center as a “top world-level research institute.” Also, secure and provide from an early stage of the center’s establishment the infrastructure needed for it to carry out its activities (e.g. land, research facilities and equipment, research space), and do so with a commitment to continually maintaining this infrastructure after the WPI grant period ends.**

KEK will provide necessary support to the Center so that it can keep the position of the world premier

international research center after the decade. KEK will position it as a research center of KEK with the proposed mission with its identity.

For examples, KEK will keep offering the infrastructure listed in section 3), even after the 10-year period, in order that the Center can develop its activities afterwards. As stated in section 2), KEK will assist the Center to have its own financial base, in the same way with other KEK research projects. Along this line, KEK will proceed toward the upgrade of the necessary facilities and acquiring the tenure positions for senior researches and technicians gradually after the sixth year.

In the next ten years, KEK will support the Center in establishing its self-reliance by offering existing research infrastructures, including particle accelerators and buildings. The Center will also gradually increase contributions from KEK, primarily for hiring four senior scientists and five high-ranked technicians who are hired entirely with the WPI grant. There are many strong research groups around KEK with great interest in the activities at QUP. Collaboration with those groups will also be beneficial to establish self-reliance, which will be an advantage of having this Center at KEK. After ten years, the Center's mission will be strongly continued. The optimal roles of KEK's existing institutions and the Center will be reorganized to continue its functions as a whole.

KEK has been renovating its organizational structure for the perpetual changes in the research needs and is keen to move forward to make the further progress with the Center. Recently, as existing examples, KEK newly founded the Center for Applied Superconducting Accelerator (CASA) since April 2019 and the Center for Integrative Quantum Beam Science (CIQus) since April 2020 and can be said that KEK has the adequate knowledge and experience for independent operation of the Center.

5) Provide a system that will in practice allow the center director to make decisions in implementing the center project, including personnel and budgets, and that will secure the autonomy of its operation.

KEK will support to establish the autonomous rules and regulations of the Center so that it can serve as a world premier international institute to realize the world-wide circulation of talented researchers. Some examples are as follows.

- In order to ensure the Center director's leadership, a Center Steering Committee with the director and a few key members from the Center will be established, which essentially decides on the Center's budget, recruitment and other important issues in a system that can be done with the director's initiative. As an inter-university research institute, KEK, in principle, requires a resolution from the Education and Research Council regarding faculty appointments. However, as an exception, we will consider delegating this task to the Center. At the same time, we will support collaboration between the Center and other research institutes and communicate with the related research community.
- KEK's existing flexible recruitment and salary systems will be fully utilized to help optimize the treatment of staff members. We will also delegate individual evaluation to the Center under the leadership of the director.

6) Provide support to the center director by coordinating with other departments regarding the assigning of researchers to the center and the creating of an effective environment for the center within the host institution. Needed adjustments to do so should be made proactively while giving consideration to their effect on the educational and research activities of those departments.

KEK Director General will properly arrange the human resource of KEK including researcher, engineers, and administrative staffs for the successful realization of the Center's visions.

The KEK Administration Bureau will fully cooperate for the Center's business to smoothly process. In order to keep the close contact, the administrative head of the Center will attend the monthly administrative meeting which is composed by the managers of each administrative department and divisions.

7) Offer cooperation in flexibly applying, revising, or supplementing the host institution's internal systems as needed for the center to effectively implement new management methods unfettered by conventional modes of operation (e.g. English-language environment, merit-based pay, top-down decision making, linkage to graduate school education).

As the Center has a different operation scheme from the one for KEK's user facilities, various new governance idea needs to be developed in the foundation of the Center. Since KEK already has flexible scheme on research and education and relevant rules including on recruitment procedure, KEK is considering that the implementation can be done without difficulty.

As for the English-language environment, KEK is hosting large international collaborations in particle physics such as Belle II and T2K experiments. 2,000 users are from foreign universities and institutes among the total 8,000 users annually and KEK is already at a level to accept another international institute. Admittedly, it is not yet in the level of some prominent foreign international institutes but the establishment of the Center will be a great opportunity for KEK to improve even further. The Center will be responsible for supporting and accommodating foreigner researcher's research and living where there will be a full back-up from the KEK's International Office and Users Office, and the synergy between KEK and the Center will be expected.

8) Provide other types of assistance to give the center maximum support in achieving its concepts and objectives and in becoming a world premier international research center in both name and deed.

KEK will provide maximum support for the development of the Center into a world-class international research center under the consistent medium- to long-term vision of the center director. KEK will promote this through the annual report of the center and the annual remarks from the program committee and working group members.

9) The host institution is to self-evaluate the results of the system reforms achieved by the center and distribute the results that it evaluates highly to all of its departments.

KEK will acknowledge the scientific achievement of the Center and utilize them in the applicable research area. In the aforementioned external review, the excellent system brought by the Center will be identified and then, after evaluated by the KEK directorate, it will be adopted to a relevant part of KEK.

10) (For host institutions that already have an existing WPI center and/or Academy center) Fully support and sustain the existing WPI and/or Academy center and advance its development as a top world-level research institute, while being capable of fully supporting the new center at the same time.

Not applicable.

11) (For host institutions that already have an existing WPI center and/or Academy center) Take the initiative to spread the existing centers' good system reform results to other departments throughout the host institution and apply them to implementing its own reforms.

Not applicable.

World Premier International Research Center Initiative (WPI)

List of Principal Investigators

- If the number of principal investigators exceeds 10, add columns as appropriate.
- Place an asterisk(*) by the name of the investigators who are considered to be ranked among the world's top researchers.
- Give age as of 1 April 2021.
- For investigators who cannot participate in the center project from its beginning, indicate the time that their participation will start in the "Notes" column.
- If there are changes from the PI list in the first screening application documents, describe the points changed and reasons in the "Notes" column.
- Include principal investigators affiliated with satellite institutions. Give the name of their satellite institutions in the "Notes" column.
- Fill in the achievements of each PI in the "Biographical Sketch of Principal Investigators."

	Name	Age	Current affiliation (Department/ School/Institution) • Title	Specialization	Effort * (%)	Notes
1	Masashi Hazumi *	56	Professor/Institute of Particle and Nuclear Studies (IPNS)/High Energy Accelerator Research Organization (KEK)	Experimental Cosmology, High Energy Physics	80	Center Director, conducting LiteBIRD R&D
2	Manabu Togawa	42	Associate Professor/Institute of Particle and Nuclear Studies (IPNS)/High Energy Accelerator Research Organization (KEK)	High Energy Physics	70	Super-radiation-hard semiconductor detectors
3	Masaya Hasegawa *	42	Lecturer/Institute of Particle and Nuclear Studies (IPNS)/High Energy Accelerator Research Organization (KEK)	Experimental Cosmology	70	LiteBIRD satellite verification tests, superconducting detector system verification technology
4	Masaya Miyahara *	40	Associate Professor/Institute of Particle and Nuclear Studies (IPNS)/High Energy Accelerator Research Organization (KEK)	Manufacturing Technology, Electronic Devices, Electronic Equipment	70	ASIC R&D
5	Nanae Taniguchi	41	Assistant Professor/Institute of Particle and Nuclear Studies (IPNS)/High Energy Accelerator Research Organization (KEK)	High Energy Physics	70	Gaseous detectors and readout
6	Adrian T. Lee *	56	Professor/Department of Physics/University of California Berkeley	Experimental Cosmology	50	Berkeley satellite office, superconducting detectors
7	Daniela Bortoletto *	62	Professor/Department of Physics/University of Oxford	High Energy Physics	20	Sumiconductor detectors
8	Maurice Garcia-Sciveres *	54	Senior Scientist/Lawrence Berkeley National Laboratory	High Energy Physics	20	Berkeley satellite office, electronics
9	Kaori Hattori	39	Senior Researcher/Research Institute for Physical Measurement/The National Institute of Advanced Industrial Science and Technology (AIST)	Electronic Devices, Electronic Equipment	40	Superconducting detectors
10	Noriko Y. Yamasaki *	54	Professor/Institute of Space and Astronautical Science (ISAS)/Japan Aerospace Exploration Agency (JAXA)	Astrophysics	20	ISAS/JAXA satellite office, Superconducting detectors, member of Science Council of Japan
11	Kazunori Nakayama	38	Assistant Professor/Faculty of Science/The University of Tokyo	Particle Physics Theory, Particle Cosmology	30	New methods to search for new quantum fields
12	Hideo Iizuka	48	Senior Fellow/Beyond X Research Division/Toyota Central R&D Labs	Wave Engineering	40	Toyota central R&D labs satellite office, Industrial applications
13	Yu Nakahama *	39	Associate Professor/Kobayashi-Maskawa Institute for the Origin of Particles and the Universe/Nagoya University	High Energy Physics	20	Data analysis, winner of Toshiko Yuasa Prize and Fumiko Yonezawa Prize

* Percentage of time that the principal investigator will devote to working for the center vis-à-vis his/her total working hours. (Activities carried out using competitive funding can be included as effort as long as they correspond to the purpose of the WPI center and are conducted for the center.)